

DELTA METALS

CUSTOM ROOF PANELS



Board and Batten

Delta Metals Steel Board and Batten simulates the look and feel of wood board and batten siding with the added benefit of durability and longevity. Our Board and Batten can be manufactured in 29 gauge or 26 Gauge Steel both coated with Sherwin Williams Weather XL paint. The hidden fastener system associated with our Board and Batten siding offers a seamless look that is sure to enhance the aesthetics of your home or business.

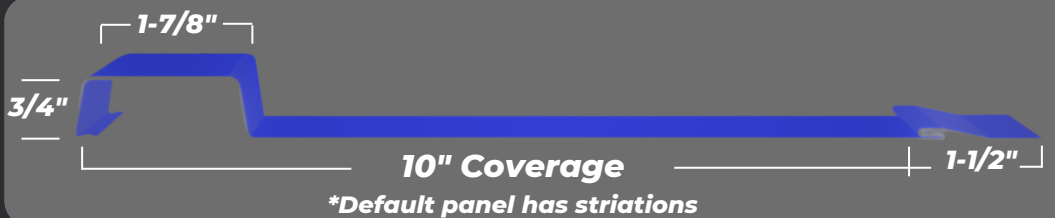
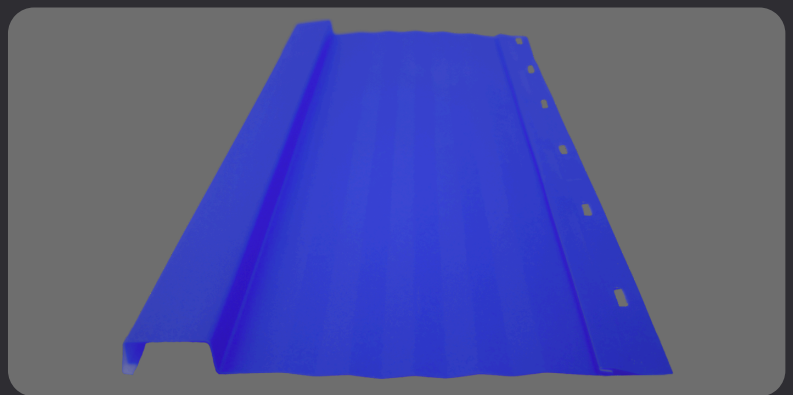
29 Ga.

26 Ga.

3/4"

Rib Height

RECOMMENDED
for siding
applications



Industry standard manufacturing processes insuring our products meet the highest tolerance specifications and quality standards.

Concealed fastening system for a clean and unobstructed appearance

Default panel has striations. we also offer a flat pan version with a signed waiver.



SPECIFICATIONS

Available Gauges: **29 Gauge**
26 Gauge

Testing: **UL 790 Class A Fire Rated**
UL 2218 Impact Resistant
UL 580 Uplist (Class 90)

Steel Thickness: **29 Ga - .0142"**
26 Ga - .0185"

Paint System: **SHERWIN-WILLIAMS**
Coil Coatings **SMP** **WeatherXL™**

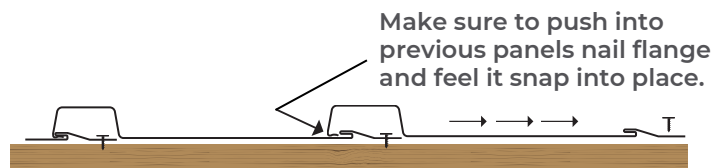
Warranty: **40 Year Lifetime Limited**
Paint Adhesion
30 Year Chalk and Fade

Rust Protection Substrate:
Galvalume AZ50

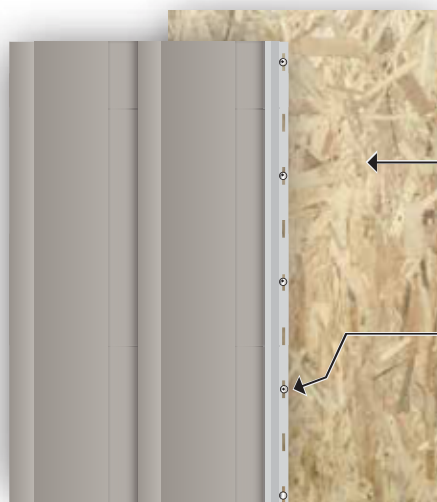
Delta Metals is neither partially nor solely responsible for improper installation OR defects as a result of installation.

Application Details

- Available in 24 Colors in 29 Gauge & 29 colors in 26 Gauge
- Snaps into place for easy Install
- 10" Panel Coverage
- 3/4" Rib Height
- Fits all our standard 3/4" Rib Trims



Fastener Guide:



We recommend that our Board & Batten Panel be secured down to a soild deck of sheathing.

And that a fastener be applied through EVERY OTHER screw flange opening.

Note: All panels are subject to surface distortion due to improperly applied fasteners. Overdriven fasteners will cause stress and oil canning across the face of the panel, at or near the point of attachment.